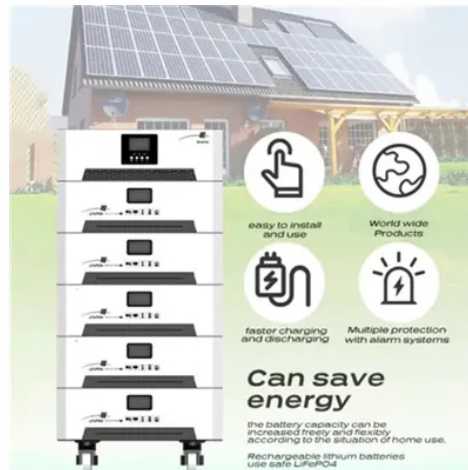




Household Solar Photovoltaic Panel Efficiency



Overview

The average efficiency of domestic solar panels is between 20% and 25%. You shouldn't generally settle for anything under 20%, especially considering that the higher the efficiency, the more panels you can fit on your roof – and the more money you'll save overall. Due to the many advances in photovoltaic technology over the last decade, the average panel conversion efficiency has increased from 15% to over 24%. 'Solar panel efficiency' refers to the amount of naturally occurring light a solar panel can convert into electricity in standard test conditions, which is a set of environmental factors used across the industry to measure efficiency. This amount is expressed as a percentage – so if a solar panel. This guide breaks down everything you need to know about solar panel efficiency, including how it's calculated, what the top-performing panels are, and why it matters for California homeowners navigating the post-NEM 3.



Article Content

Solar Panel Efficiency Explained: What It Is and Why It ...

Learn what solar panel efficiency means, why it matters in 2025, and how to choose the best panels for your home.

How efficient are solar panels? | Average percentage

Solar panels have rapidly increased in efficiency over the past few decades. Progress has slowed in recent times, but having reached a top efficiency rating of 25%, domestic panels are ...

Solar Panel Efficiency Ratings: What They Really Mean for Your Home

Most residential solar panels typically achieve efficiency ratings between 15% and 20%, though premium panels can reach up to 23%. Remember that even panels with lower efficiency ...

The most efficient solar panels in 2026

Solar panel efficiency is the percentage of incoming sunlight that a single solar panel can convert into electricity. CW Energy, Maxeon, SEG Solar, Silfab, and CertainTeed currently offer the ...

Solar Panel Efficiency (2026) | ConsumerAffairs®

A good residential solar panel today typically has an efficiency rating between 20% and 22%, meaning it converts about one-fifth of the sunlight it ...

Solar Panel Efficiency

Residential solar panels range from 13 to 22.8% efficiency, with most panels hovering around the 20% mark. There are advantages to having high-efficiency ...

6 Best Solar Panels for Homes (2026) | Today's ...

Efficiency is how much energy a solar panel can convert from the sun into usable energy for your home. The higher the efficiency, the better the ...

Most Efficient Solar Panels for 2025: US Customers ...

We'll tell you which panels get top marks for turning sunlight into the most energy, and we'll explain how much solar panel efficiency actually matters when it ...

The 7 Most Efficient Solar Panels of 2026: Expert Reviewed

In this guide, we cover our top picks, the science behind solar efficiency, and how to choose the right panels to power your ...

Contact Us

For more information, pricing, or custom solutions, please contact us:

Website: <https://proton-engineering.eu>

Email: info@proton-engineering.eu

Phone: +1 832 471 8952

Address: 12345 Lake City Way, Suite 200, Houston, TX 77001, USA

This document is for informational purposes only. Specifications subject to change without notice.

