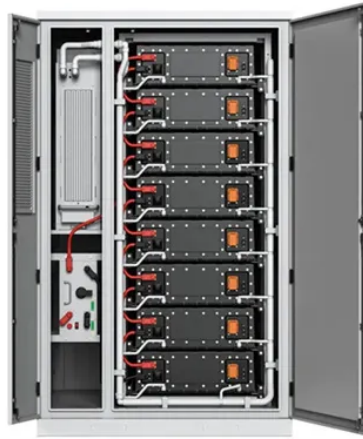




What is a double-glass component



Overview

Double-glazed glass, often referred to as an Insulated Glass Unit (IGU), is a common construction element designed to significantly improve a building's thermal performance. This specialized glass assembly consists of two individual panes of glass separated by a measured space, known as the cavity. At the core of the assembly is the spacer bar, which maintains the distance between the two panes. It. The double glazed unit, which slots into a window frame, is made up of a number of components. The cavity - the gap formed between the component parts this can be filled with air or argon gas. Please attach any plans or photos you have. PDF, PNG or JPG under 5mb file size accepted. This entire assembly then fits into a frame that holds everything in place and connects to. Double-hung and casement windows feature distinct components like sashes, locks, grilles, and weatherstripping that impact both functionality and aesthetics.



Article Content

Double Glazed Window Parts Diagram and Components

The primary components of a double-glazed window include the outer pane, inner pane, spacer bar, and sealant. The outer and inner panes are typically made of glass, with a gap between them that is filled ...

Window Parts Explained: Frame, Sash & Glass Guide ...

Single Pane: A single sheet of glass, found in older homes but less energy-efficient.
Double Pane: Two glass layers with an insulating space ...

Insulated glazing

A window with insulating glass is commonly known as double glazing or a double-paned window, triple glazing or a triple-paned window, or quadruple glazing or a quadruple-paned window, depending ...

What are the key components of double glazing?

What are the key components of double glazing? What are the key components of double glazing? The double glazed unit, which slots into a window frame, is made up of a number of components. It ...

What Are Double-Paned or Double-Glazed Windows?

Double-paned windows, also known as double-glazed windows, are the standard choice in most residential construction and remodeling projects. ...

Inside a Double Glazed Unit: Frames, Gas & Seals Explained

Learn what's inside a double glazed unit—frames, spacers, gas fills and seals. Understand how each component may influence performance, longevity and comfort.

Understanding Insulated Glass Units (IGUs) 101: A ...

Insulating glass, also known as double-paned or triple-paned glass, is designed to provide superior insulation and energy efficiency for homes and ...

Understanding the Essential Parts of a Window for ...

Add in components like grilles, weatherstripping and locks, and you get a system that balances form and function. See the labeled diagram above ...

What Is Double Glazed Glass and How Does It Work?

Double-glazed glass, often referred to as an Insulated Glass Unit (IGU), is a common construction element designed to significantly improve a building's thermal performance. This ...

How Does Double Glazing Work (what is double ...

Double glazing refers to a window that has two panes of glass. The main component of the window is the double glazed sealed unit, also known as an ...

Contact Us

For more information, pricing, or custom solutions, please contact us:

Website: <https://proton-engineering.eu>

Email: info@proton-engineering.eu

Phone: +1 832 471 8952

Address: 12345 Lake City Way, Suite 200, Houston, TX 77001, USA

This document is for informational purposes only. Specifications subject to change without notice.

